

Audition Form
“SPAMALOT”

<p>Name (First and Last):</p> <p>Email:</p> <p>Grade Level:</p>	<p>Current Activities you're involved in:</p> 	<p>Dates and Times of these Activities</p>
<p>Outside School Activities (Work, Church, etc)</p> <p>Dates and Times:</p>	<p>Would you be able to attend rehearsals 2-3 days a week from 6:30-9ish?</p> <p>Would you be able to attend rehearsals after school? If so what days?</p> <p>Would you be able to attend Saturday rehearsals?</p>	<p>Which type of role are you interested in, Major or Minor?</p> <p>Would you accept any role given to you?</p>

Director's Notes:

homage to original Monty Python sketches, where all female characters were played by men. One school cast a very popular athlete in a cameo role as DENNIS GALAHAD'S MOTHER. Another school cast a beloved school secretary, who has been doing the morning announcements for the past fifty years, as the VOICE OF GOD. While another school had a local seafood shop sponsor the 'Fish Schlapping Scene'. In their program it said, "The Fish Schlapping Dance brought to you by D&K Fresh Seafood." Be creative.

A complete prop list can be found at the back of this Director's Book. Additional resources (projections, props, costumes, backdrop and set rentals) can be found on the SPAMALOT page on the TRW website.

Break a leg!

THE PLACE

Medieval England and Here

THE TIME

932 A.D. and Now

CHARACTERS

KING ARTHUR (Late 30s-60s.): The King of England who sets out on a quest to form the Knights of the Roundtable and find the Holy Grail. Great Humor. Good singer.

SIR ROBIN (30s-40s): A Knight of the Roundtable. Ironically called 'Sir Robin the Brave,' though he couldn't be more cowardly. Joins the Knights for the singing and dancing.

SIR LANCELOT d/b/a LANCE (30s-40): A Knight of the Roundtable. He is fearless to a bloody fault, but through a twist of fate, does discover his 'softer side.'

PATSY (30s-40s): King Arthur's horse and servant. Underappreciated but always longing for King Arthur's approval. Good, funny, physical mover with some tap dancing.

SIR GALAHAD (30s): A Knight of the Roundtable. Begins as Dennis, a lower class 'mud gatherer' who becomes knighted and transforms into the dashing Sir Galahad. Strong bari/tenor singing required.

SIR BEDEVERE (20s-40s): A Knight of the Roundtable. An inept scholar. No solo singing.

THE LADY OF THE LAKE (20s-30s): A Diva. Strong, beautiful, possesses mystical powers. The leading lady of the show. Great singing voice is essential, as she must be able to sing effortlessly in many styles and vocal registers.

***HISTORIAN:** A tweedy academic. Must have excellent diction.

***NOT DEAD FRED:** A sickly little fellow who, despite others' beliefs, claims he is "not yet dead."

***PRINCE HERBERT:** The hopeful and frilly prince who loves to sing, and pines for his love atop a tower.

*Can be played by the same actor or different actors.

THE VOICE OF GOD may be live or recorded. (Eric Idle's GOD voiceover is provided on the TRW Production CD.)

ENSEMBLE: The ensemble/chorus also cover the following roles:
(These roles can all be played by female or male actors.)

MAYOR and FINLAND VILLAGERS

SINGING MONKS: Males can sing offstage with female monks onstage

SIR NOT APPEARING: DON QUIXOTE or any other well-known knight such as BATMAN the Dark Knight, a Jedi Knight, a Knight of Columbus, etc. (This character is a good opportunity for a cameo appearance by a beloved administrator, local official, etc.)

DENNIS GALAHAD'S MOTHER: a shrill peasant woman (often played by a large male actor as an homage to the original Python sketches)

THE DANCING MONK

THE DANCING NUN

THE FRENCH TAUNTER: an arrogant, condescending, over-the-top Frenchman

TWO FRENCH GUARDS: also arrogant, condescending, over-the-top Frenchman

ROBIN'S MINSTRELS: In Sir Robin's band

THE KNIGHT OF NI: an absurd, cartoonish leader of a peculiar group of Knights

THE KNIGHTS OF NI: usually played by female actors

THE BLACK KNIGHT: who is always ready to duel despite multiple injuries.

PRINCE HERBERT'S FATHER: a wealthy, brutish Yorkshireman at odds with his sensitive son

GUARD 1: The lead guard

GUARD 2: A drunken, useless guard

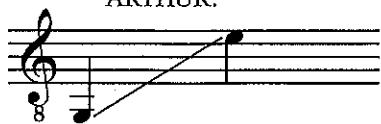
CONCORDE: Sir Lancelot's horse and servant

TIM THE ENCHANTER: a ghostly being with a Scottish accent.

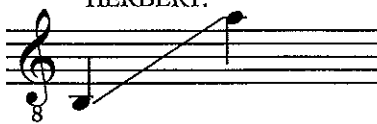
SIR BORS: a knight who will confront the killer rabbit

Character Ranges

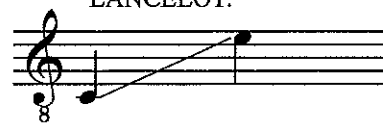
ARTHUR:



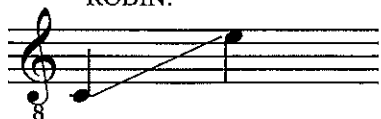
HERBERT:



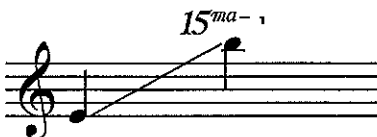
LANCELOT:



ROBIN:



LADY OF THE LAKE:



GALAHAD:



PATSY:



