

COME WITH ME

from *MONTY PYTHON'S SPAMALOT*

Lyrics by ERIC IDLE
Music by JOHN DU PREZ and ERIC IDLE

Gently



LADY OF THE LAKE:

Come with me, come with me.



Come with me, sweet Gal - a - had. You'll be a man, join



Ar - thur's clan. Come with me and I will make you

B7sus



B7/A



G



D/F#



Em



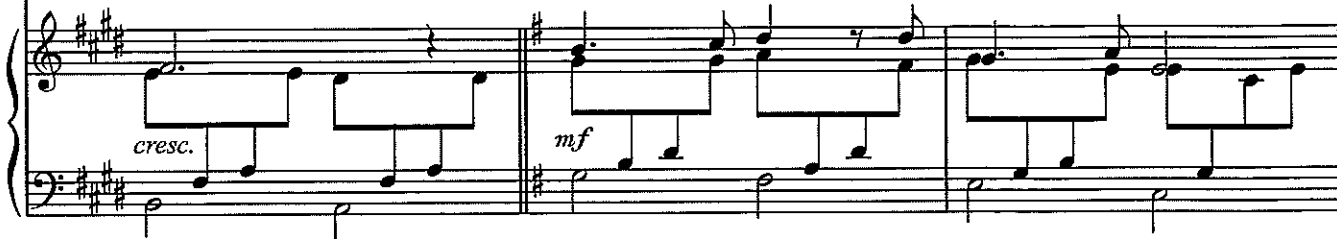
C



glad.

Gal - a - had,

sweet Gal - a - had,



cresc.

mf

G



Am7



D7sus



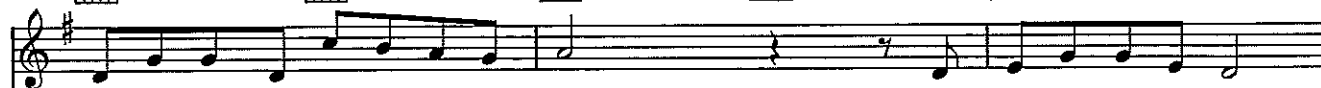
D7



C

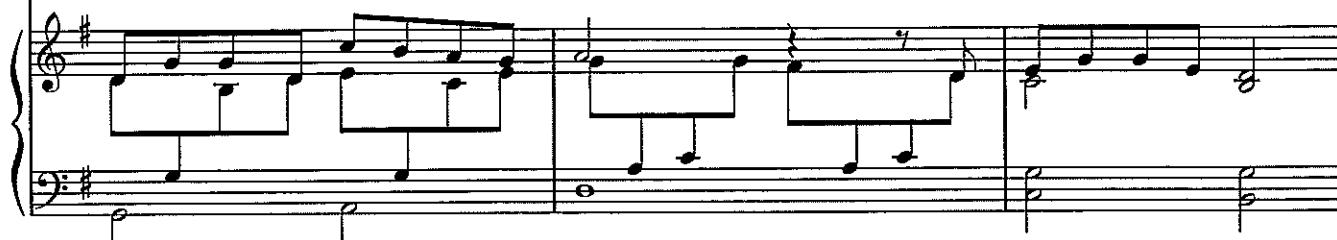


G/B



be a Knight, it's time to take your vow.

If you come with me now,



Am7



D7



G



C/G



G

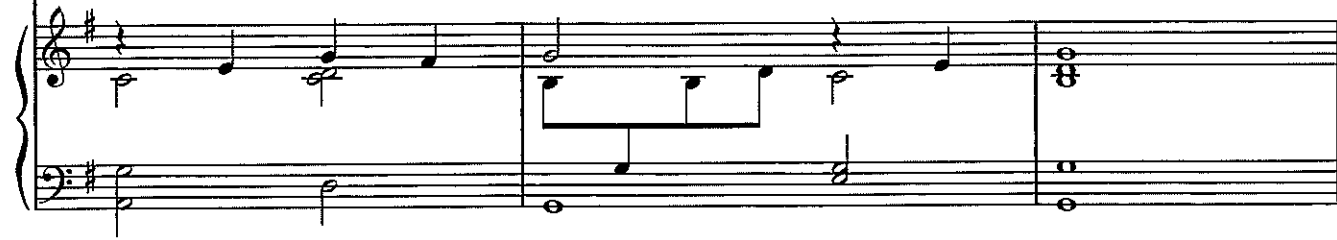


DENNIS:



I'll show you how.

Oh, wow!



KING ARTHUR'S SONG

from MONTY PYTHON'S SPAMALOT

Lyrics by ERIC IDLE
Music by JOHN DU PREZ and ERIC IDLE

Pompously brisk
N.C.

ARTHUR:

I am Ar - thur, King of the

Chords: G, G/B, D

Chord diagrams: G (000332), G/B (x00332), D (xx0232)

Brit - ons, Lord and Rul - er of all: Of

Chords: G, G/B, C, G/B, Am, A7/C#, Dsus, D7

Chord diagrams: G (000332), G/B (x00332), C (x02340), G/B (x00332), Am (x02240), A7/C# (x02340), Dsus (xx0232), D7 (xx0232)

Eng - land, and Scot - land, and e - ven ti - ny lit - tle

Chords: C, Bsus, B7, Em, Dsus, D, G, G/B, C, Am

Chord diagrams: C (x02340), Bsus (x02240), B7 (x02240), Em (022500), Dsus (xx0232), D (xx0232), G (000332), G/B (x00332), C (x02340), Am (x02240)

Copyright © 2005 Rutsongs Music and Ocean Music LA Inc.
All Rights Reserved Used by Permission

Dsus



D7



G



GUARD A:

bits of Gaul. And I'm the emperor of Norway. Bugger off!

PATSY:

He is Ar - thur, King of the Brit - ons, and

C



G/B



Am



A7/C#



Dsus



D7



C



Bsus



B7



we are out seek - ing men, ver - y strong men and ver - y

Em



Dsus



D



G



G/B



C



Am



Dsus



D7



G



ARTHUR:

a - ble, to sit at our ver - y, ver - y, ver - y round ta - ble.

Cheerful Soft-Shoe (♩ = ♩³)

B7
x02432

Bm7/E
x02432

E13b9
x02432

A
x02432

F#m
x02432

Add KNIGHTS (2nd time):

this-'ll help things turn out for the best... And, al - ways look on the

Bm7
x02432

E9
x02432

A
x02432

F#m
x02432

Bm7
x02432

E7
x02432

bright side _ of life. (whistle)

A
x02432

F#m
x02432

Bm7
x02432

E9
x02432

A
x02432

F#m
x02432

Al - ways look on the right side _ of life. (whistle)

Bm7
x02432

E7
x02432

Bm7
x02432

E9
x02432

PATSY (both times):

3

{ If life seems jol - ly rot - ten, there's
For life is quite ab - surd, _ and

A F#m7 Bm7 E9

some - thing you've for - got - ten, and that's to laugh and smile and dance and
 death's the fi - nal word. You must al - ways face the cur - tain with a

A Bm7 E9 A F#7

sing. When you're feel - ing in the dumps, don't be sil - ly chumps. . Just
 bow! For - get a - bout your sin. Give the au - di - ence a grin. . En -

B7 A/C# Dm6 B7/D# 1.E E13b9 2.E Ebmaj7/F F9

purse your lips and whis - tle, that's the thing! And,
 joy it, it's your last chance an - y - how!

Bb Gm Cm7 F9 Bb Gm

ARTHUR:
 Al - ways look on the bright side — of death, (whistle)